

CRED CRUNCH

Issue No. 8

“Disaster Data: A Balanced Perspective”

March 2007

The year 2006 was characterized by a return to a kind of “normality” after the last years’ major events. However, even though the disasters in 2006 have not captured as much attention as those of recent years, it is important to keep in mind that they have still had devastating impacts - particularly in developing countries. In 2006 there were 426 reported natural disasters that killed more than 23,000 people, affected 143 million others, and were the cause of more than 34.6 billion US\$ in economic damages.

Asia remained the most affected continent, with the two largest disasters of 2006: an earthquake that hit Indonesia in May and killed 5,578 people, and typhoon Durian in December that killed 1,399 people in the Philippines.

The 2006 figures showed a strong increase in the occurrence of floods, with 235 reported, which accounted for 55% of all disasters registered. Floods and windstorms continued to be the two major causes of economic impact. When combined, these two extreme events caused over 25.1 billion US\$ in economic losses in 2006.

An interesting fact to point out from 2006 is the presence of *four* European countries among the top ten countries regarding the total number of deaths caused by natural disasters. This is due to the impact of two extreme temperature events that hit Europe during the year. The officially reported casualty figures for Belgium, the Netherlands and France showed that these countries suffered a severe excess mortality due to the July heat wave¹, while Ukraine reported 803 deaths caused by a cold wave.

Dr. Debarati Guha-Sapir
Director

¹ These are figures based on preliminary reports and hence subject to possible changes. This issue will be analyzed in the June Cred Crunch

Economic impact in 2006: 10 most affected countries

In absolute amounts (US\$ million)		As percentage of previous-year GDP	
China	13,551	Guyana	21.50%
United States	5,031	Viet Nam	2.07%
India	3,390	Indonesia	1.18%
Indonesia	3,314	Philippines	1.01%
Japan	2,533	Tajikistan	0.94%
Australia	1,282	Lithuania	0.91%
Russia	1,187	China	0.69%
Viet Nam	1,099	Ecuador	0.46%
Philippines	988	India	0.42%
Spain	659	Bolivia	0.36%

Natural disasters² in 2006: summary

	2006	2000-2005 yearly average
No. of country-level disasters	426	386
No. of countries affected	108	117
No. of people killed	23047	81787
No. of people affected	143 million	249 million
Economic damages (US\$)	34.6 billion	87.6 billion

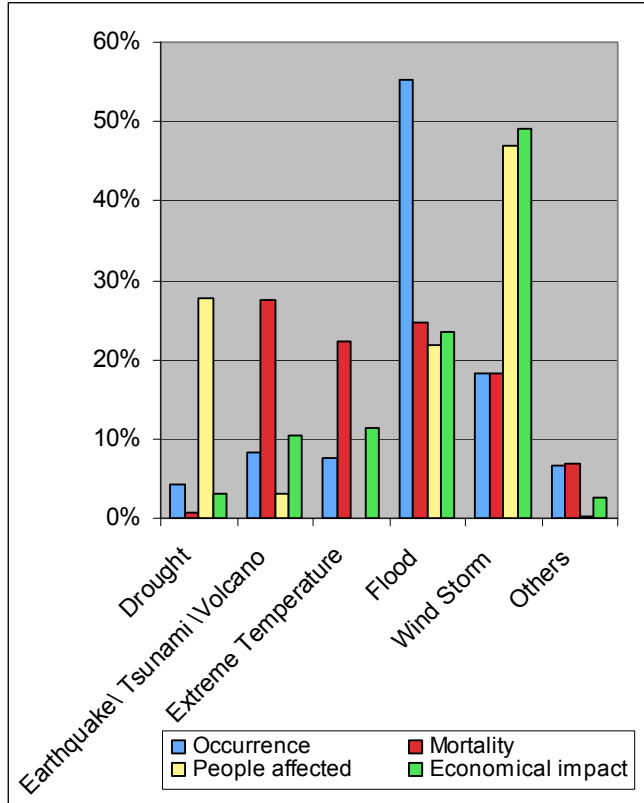
² The CRED CRUNCH newsletter does not include epidemics as natural disasters unless explicitly stated.

Human impact in 2006: 10 most affected countries

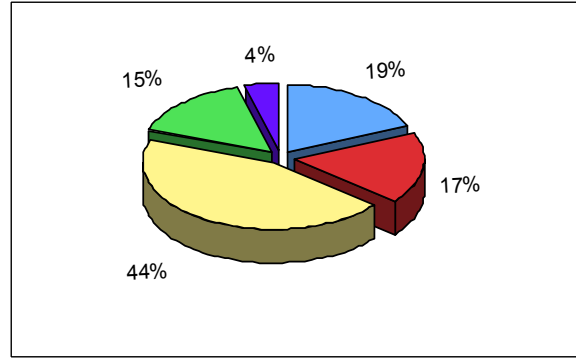
No. of people killed		No. killed/100,000 inhabitants	
Indonesia	7,511	Belgium	9.02
Philippines	2,984	Netherlands	6.14
China	2,109	Philippines	3.59
India	1,611	Indonesia	3.37
France	1,402	France	2.25
Netherlands	1,000	Burundi	1.88
Ethiopia	951	Latvia	1.73
Belgium	940	Ukraine	1.73
Ukraine	803	Afghanistan	1.28
Viet Nam	579	Somalia	1.24

No. of people affected		No. affected in % of the country population	
China	88.74 million	Malawi	40.1%
Philippines	8.61 million	Burundi	28.7%
India	7.38 million	Niger	21.8%
Malawi	5.16 million	Djibouti	18.9%
Kenya	4.28 million	Kenya	12.5%
Indonesia	3.95 million	Philippines	10.4%
Viet Nam	3.35 million	Mali	7.6%
Thailand	3.26 million	Afghanistan	7.5%
Niger	3.05 million	Mozambique	7.2%
Ethiopia	3.03 million	China	6.9%

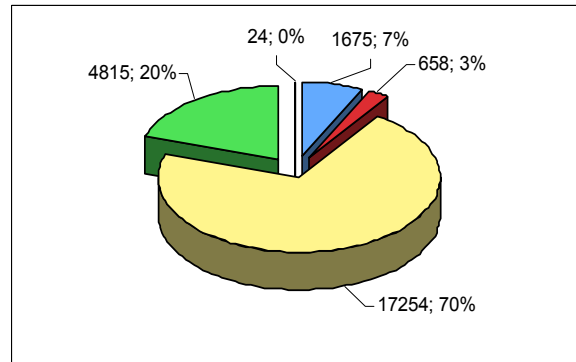
2006 Disasters characteristics by disaster type



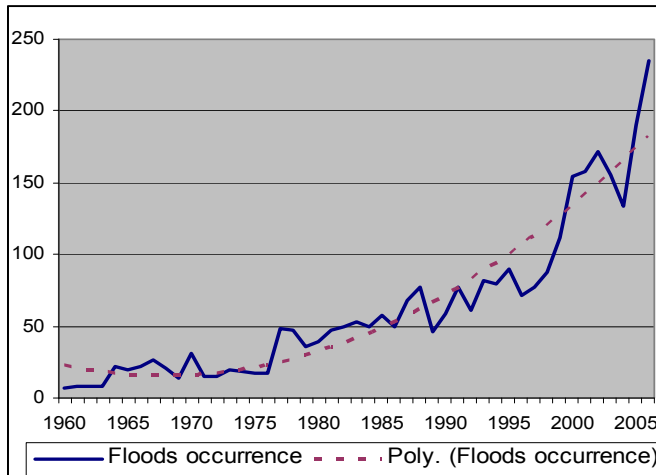
Disaster occurrence by continent, 2006



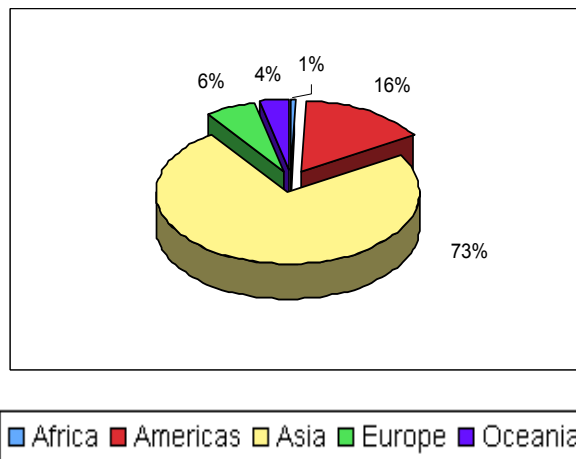
Disaster mortality by continent, 2006



Worldwide Floods occurrence from 1960 to 2006



Disaster economic damages by continent, 2006



CRED News

- April 2007, **MICRODIS project kick-off meeting**, April 18-19, Brussels, Belgium.
- June 2007, **Survey Conference, Surveying Health in Complex Emergencies**, June 4-5, Brussels, Belgium (<http://www.cred.be/SurveyConference2007/>).
- July 2007, **International CRED Course: Assessing Public Health in Emergency Situations (APHES)**, July 16-27, Brussels, Belgium (<http://www.cred.be/cred1/publicat/APHES%20-%20CRED%20summer%20course.pdf>).

Please note that disaster data are subject to change as validation and cross-referencing of the sources is undertaken and as new information becomes available. For any enquiries please contact cred-crunch@em-dat.net or visit www.em-dat.net.