

CRED CRUNCH

Issue No. 11

“Disaster Data: A Balanced Perspective”

January 2008

Floods

Welcome to 2008 ! On behalf of the CRED team let me wish you a peaceful and productive year.

This issue is devoted to the floods and related disasters. Floods are the most reported disasters in EM-DAT, accounting for more than 30% of all disaster entries. Over the last decade, and particularly the last two years, flood occurrence has strongly increased. Despite the increase in occurrence, the number of people killed remained stable, leading to a decrease in the average flood mortality. Nevertheless, it is important when looking at this trend to keep in mind the influence of the recent major improvements in the reporting flood occurrence and their impacts, especially for the “smaller” events.

Floods are one of the major sources of hardship. Each year on average they kill more than 9000 people and affect more than 115 million others. With more than 19 US\$ billions in economic damages; floods are the second most costly natural disasters after windstorms.

Asia is the region which pays the highest toll in terms of flood impacts. During the last decade, over 96% of the people affected by floods in the world live in Asia.

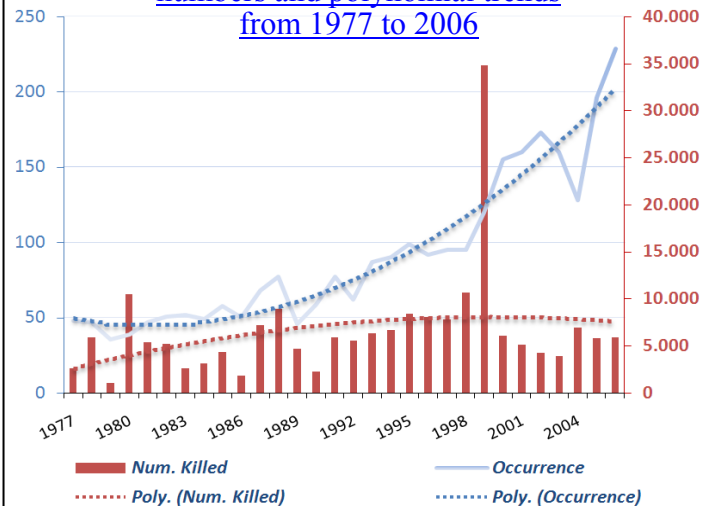
The monthly distribution of the flood events shows that floods are mainly concentrated from May to October with a peak in August. This unusual distribution could be explained by the impact of the monsoon rains.

The last years’ preliminary figures show that in 2007, once again, we have been witnesses to major flood events. Especially, we all have in mind the exceptional summer floods in Asia (India, China), in the UK, or Africa which has been particularly affected this year .

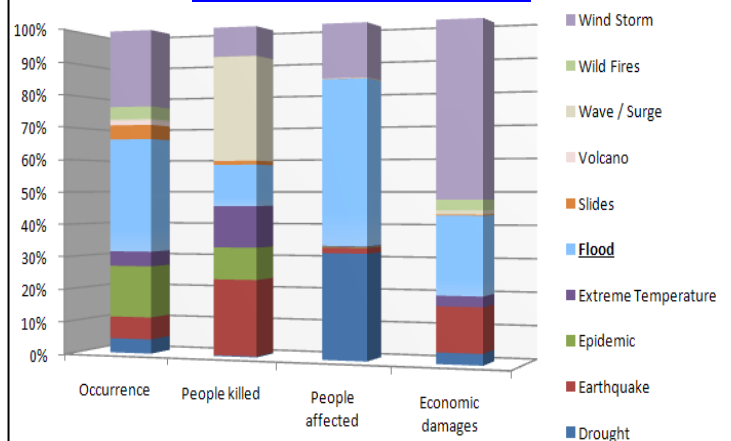
Future climate change presents potential impacts in terms of the strong likelihood of an increase in quantity and severity of flooding events. It is important once again to remember the need for better preparedness and assistance to those bearing the burden of natural disasters.

Dr. Debarati Guha-Sapir

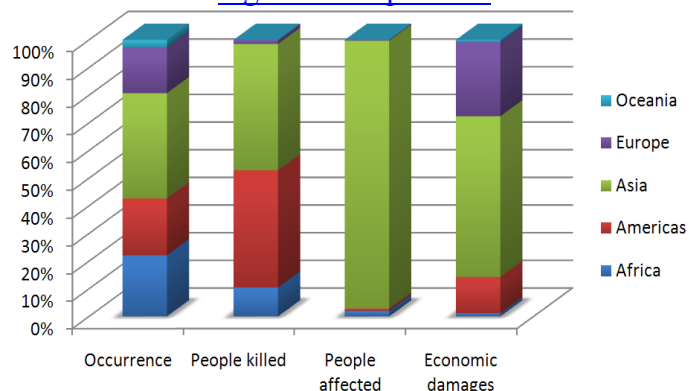
Reported flood occurrence and mortality numbers and polynomial trends from 1977 to 2006



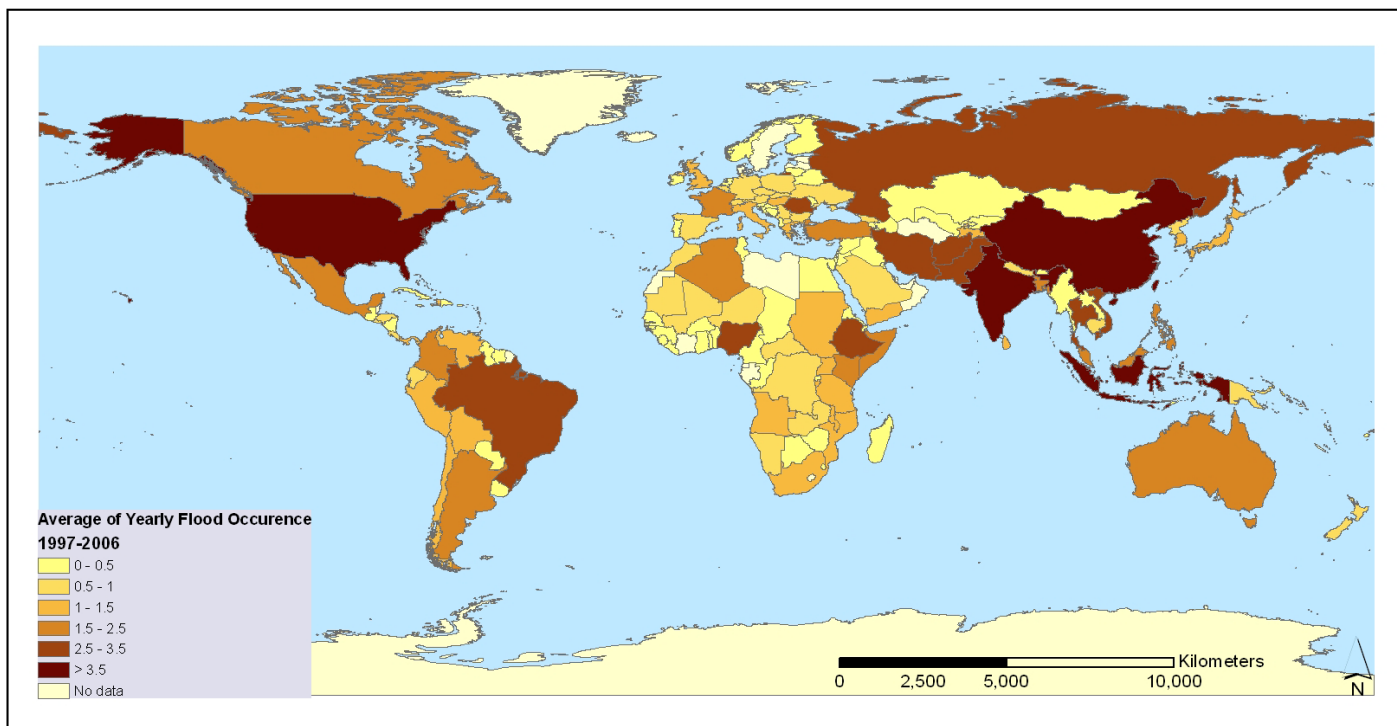
Reported flood occurrence and impacts compared to the other natural disasters*



Reported flood occurrence and impacts regional comparison*

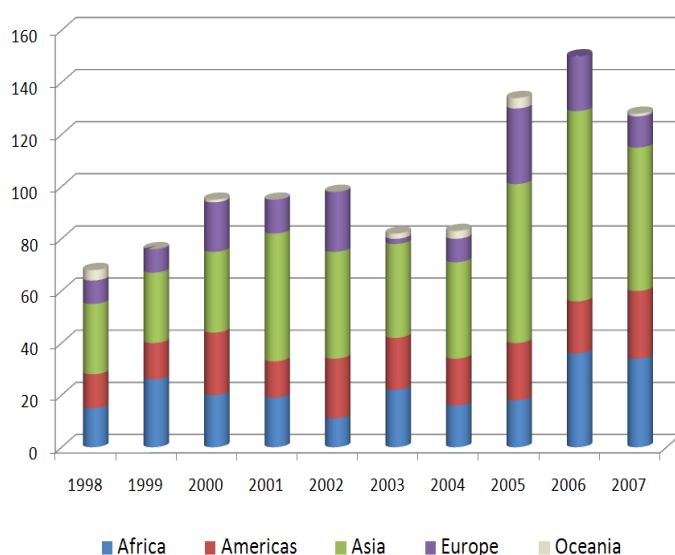
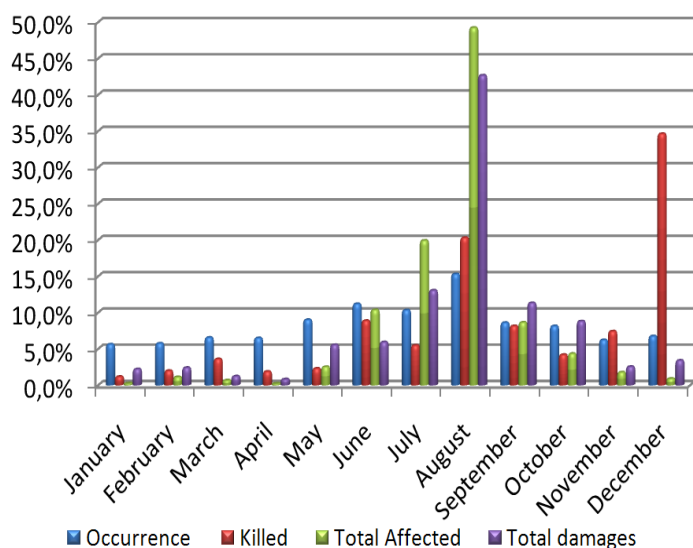


* the percentages are calculated over a 10 year period (1997-2006)



Reported flood occurrence and impacts: average monthly distribution*

Trends by region of the May to October reported flood occurrence, including 2007 figures



* the percentages are calculated over a 10 year period (1997-2006)

CRED News

- The United Nations International Strategy for Disaster Reduction (UN/ISDR) and the Centre for Research on the Epidemiology of Disasters (CRED) will unveil the official figures of the number of natural disasters in 2007 and their impacts at a press conference in Geneva, which will be held on January 18, 2008.
- The 4th Technical Advisory Group Meeting (TAG) of the Complex Emergency Database (CE-DAT) will take place on January 24-25, 2008, in Brussels, Belgium
- CRED is happy to announce the launch of the new EM-DAT website : www.emdat.be
- CRED is pleased to present the 2008 Summer Course on Assessing Public Health in Emergency Situations (APHES). This course is scheduled to take place on July 7-18, 2008 in Brussels, Belgium. More information at: <http://www.cred.be/Aphes/>

Please note that disaster data are subject to change as validation and cross-referencing of the sources is undertaken and as new information becomes available. For any enquiries please contact contact@emdat.be or visit www.emdat.be