

## 2009 First semester balance

Although global disaster impact figures in the first half of the year 2009 appeared relatively low compared to the 1999-2008 yearly average, many countries, mostly in Asia and South America, suffered major losses.

Preliminary EM-DAT figures from January to end of June 2009 showed over 100 natural disasters. These killed 2,200 people, affected more than 8.4 million others and caused over 7.3 billion US\$ of damages. Floods and storms were the two most reported types of disasters, accounting respectively for 43% and 25% of the disaster occurrence.

Asia, historically strongly affected by natural disasters, witnessed major disasters in the first semester of 2009. Tropical cyclone 'Aila' with subsequent floods and tidal waves, which hit Bangladesh and India in May, killed 220 people and affected more than 4 million others. The Philippines were struck by consecutive storms, floods, and landslides, killing over 165 people and affecting over 1.5 million people. Storms and floods in June in China caused severe economic damages.

Nearly a quarter of reported natural disasters occurred in Africa, mostly floods and storms. However, no economic damages were reported in this continent following these disasters, illustrating the lack of reporting in Africa and inadequate methodologies to estimate economic damages caused by natural disasters in general.

The Aquila earthquake shook Italy on April 6, causing nearly 300 deaths and leaving many people homeless. The earthquake was the second largest earthquake in Italy in the last 30 years, after the 1980 Irpinia earthquake.

Floods and landslides in Brazil through April and May affected over 1.1 million people. The floods are among the biggest floods in Brazil in a century.

The first half of 2009 underlines societies' vulnerability to climate-related and geophysical disasters. A long road remains to better protect the vulnerable and developing societies.

*Dir. Debarati Guha-Sapir*

## Natural disaster\* figures: 2009 first semester (January-June)

	2009 1st semester	1999-2008 1st semester average
No. of disasters	106	171
No. of people killed	2,209	30,611
No. of people affected	8,430,197	135,130,465
Economic damages (Million \$US)	7,285	33,979

\*The CRED CRUNCH does not include epidemics as natural disasters unless explicitly stated

## The 10 largest natural disasters over the first semester of 2009

### By number of people killed

Disaster	Month	Country	No. killed
Earthquake	Apr	Italy	295
Cold wave	May-Aug	Peru	274
Cyclone 'Aila'	May	Bangladesh	190
Wildfire	Feb	Australia	180
Heat wave	Apr-June	India	120
Flood	Mar	Namibia	92
Cyclone 'Emong'	May	Philippines	67
Flood	Mar	Indonesia	64
Flood	Mar-Apr	Angola	60
Flood	Apr-May	Brazil	42

## By estimated economic damages

Disaster	Month	Country	Total damage (million US\$)
Earthquake	Apr	Italy	2,500
Storm	Apr	United States	1,500
Wildfire	Feb	Australia	1,300
Storm 'Klaus'	Jan	France	695
Flood	Apr-May	Brazil	500
Storm	Apr	United States	240
Earthquake	Jan	Costa Rica	100
Earthquake	May	Honduras	100
Storm	Jun	China P Rep	66
Flood	Jun	China P Rep	59

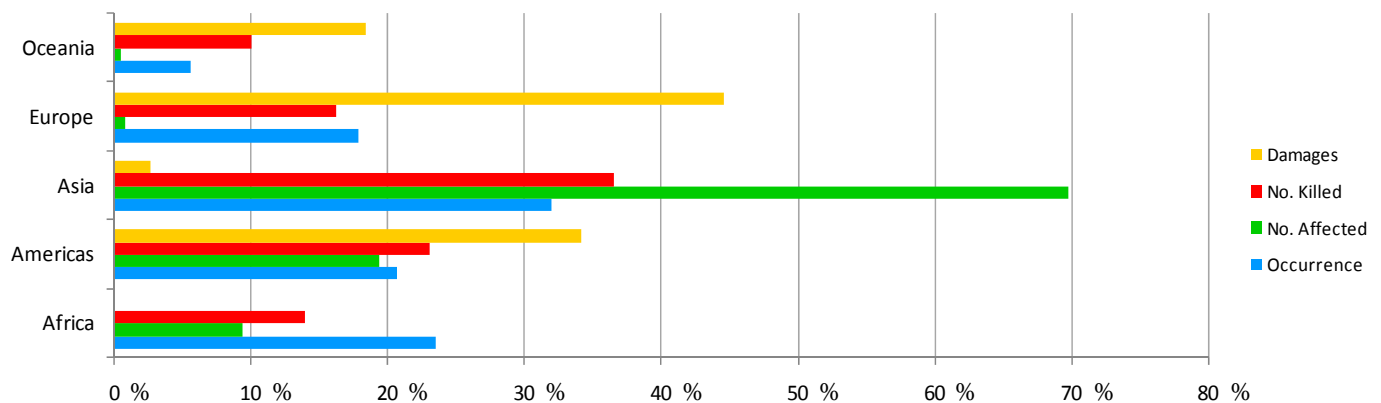
## By number of total people affected

Disaster	Month	Country	No. affected
Cyclone 'Aila'	May	Bangladesh	3,935,341
Flood	Apr-May	Brazil	1,150,900
Flood	Jan	Philippines	537,991
Cyclone 'Emong'	May	Philippines	412,430
Cyclone 'Dante'	Apr-May	Philippines	383,465
Flood	Mar	Namibia	350,000
Flood	Mar-Apr	Angola	220,000
Flood	Jan	Philippines	200,000
Drought	Jan-May	Paraguay	185,000
Earthquake	Jan	Costa Rica	128,618

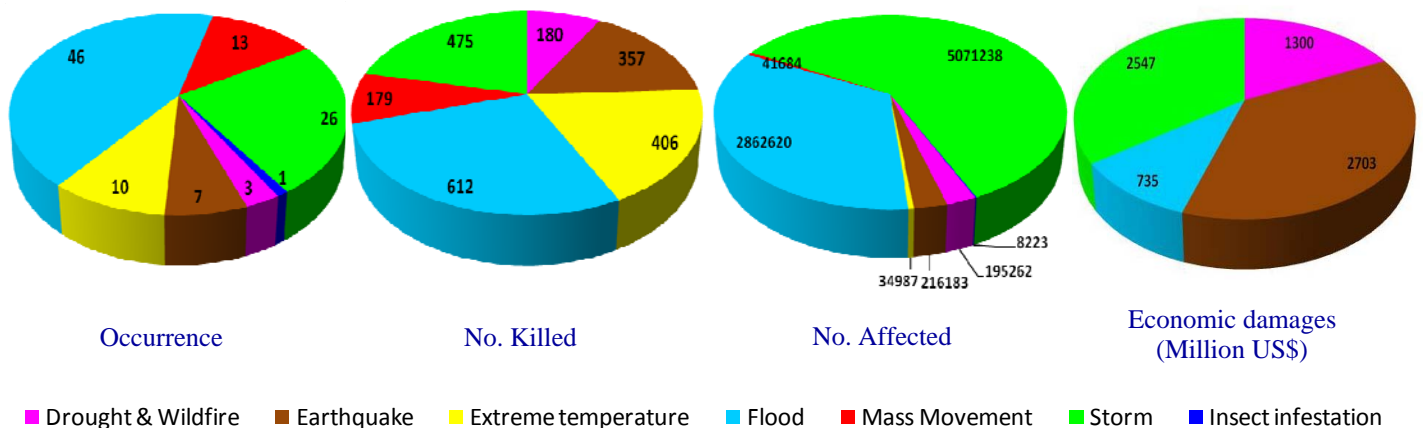
All the figures presented in the CRED CRUNCH are coming from "EM-DAT: The OFDA/CRED International Disaster Database"

## 2009 First semester natural disaster occurrence and impacts: regional comparison

Continent	Occurrence	No. Killed	No. Affected	Damage (Million US\$)
Africa	25	309	794,467	0
Americas	22	511	1,638,548	2,492
Asia	34	808	5,884,188	200
Europe	19	359	70,084	3,249
Oceania	6	222	42,910	1,343



## 2009 First semester natural disaster occurrence and impacts by disaster type



## CRED News

- ◆ CRED has launched its new website. Check the latest news on [www.cred.be](http://www.cred.be).
- ◆ The new EM-DAT website was launched during the TAG meeting in New York from 26-28 October 2009. Visit [www.emdat.be](http://www.emdat.be). Please send any comments to [contact@emdat.be](mailto:contact@emdat.be).
- ◆ The MICRODIS coordination team has made a re-look to the previous website and created new online sections to showcase the MICRODIS project. See [www.microdis-eu.be](http://www.microdis-eu.be).
- ◆ The MICRODIS team will have a booth at the EC Civil Protection Forum 'Towards a more resilient society' on 25 and 26 November 2009 in Brussels.
- ◆ The CE-DAT Survey Completeness Checklist, intended to assist field personnel in preparing complete reports of anthropometric and mortality surveys, is available on [www.cedat.be/Field%20Resources](http://www.cedat.be/Field%20Resources).

Please note that disaster data are subject to change as validation and cross-referencing of the sources is undertaken and as new information becomes available. For any enquiries please contact [contact@emdat.be](mailto:contact@emdat.be) or visit [www.emdat.be](http://www.emdat.be)