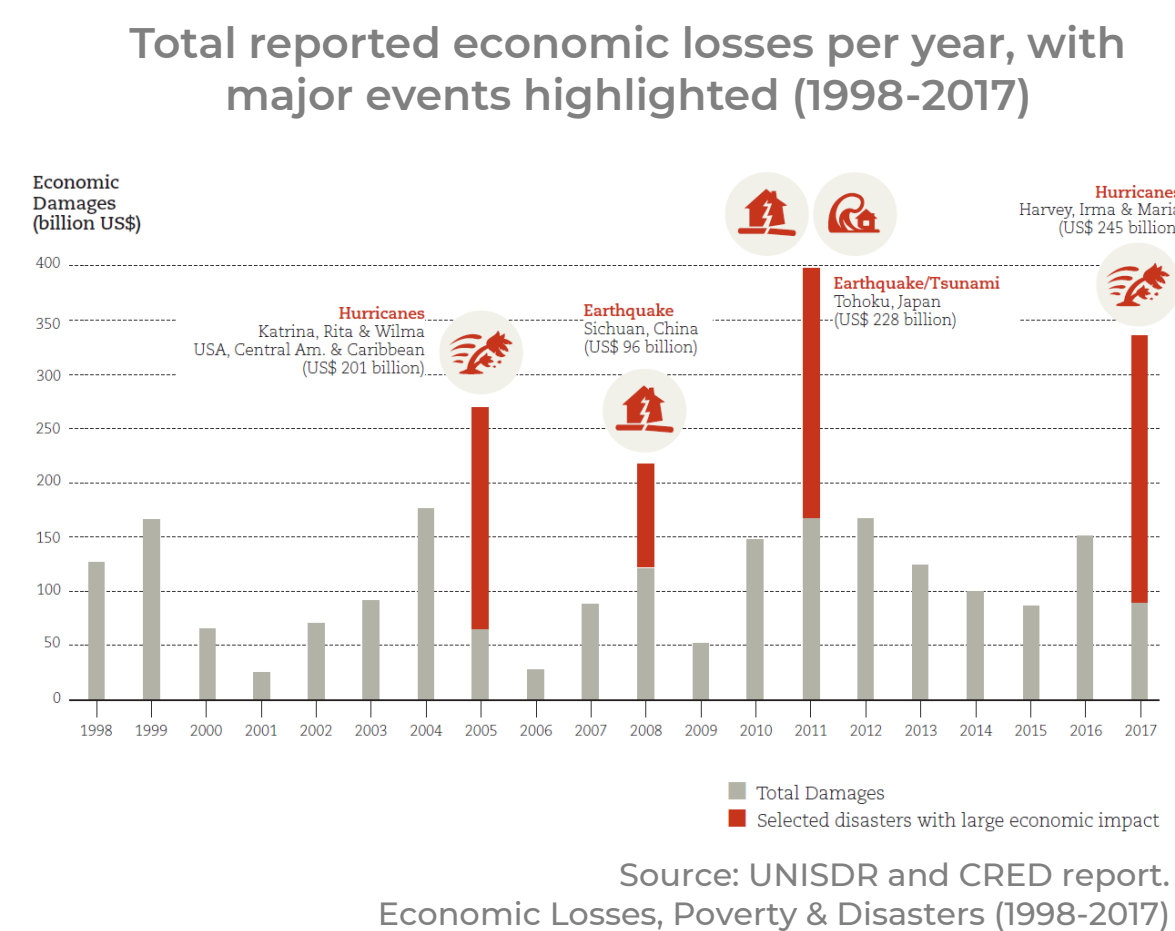


NATURAL DISASTERS

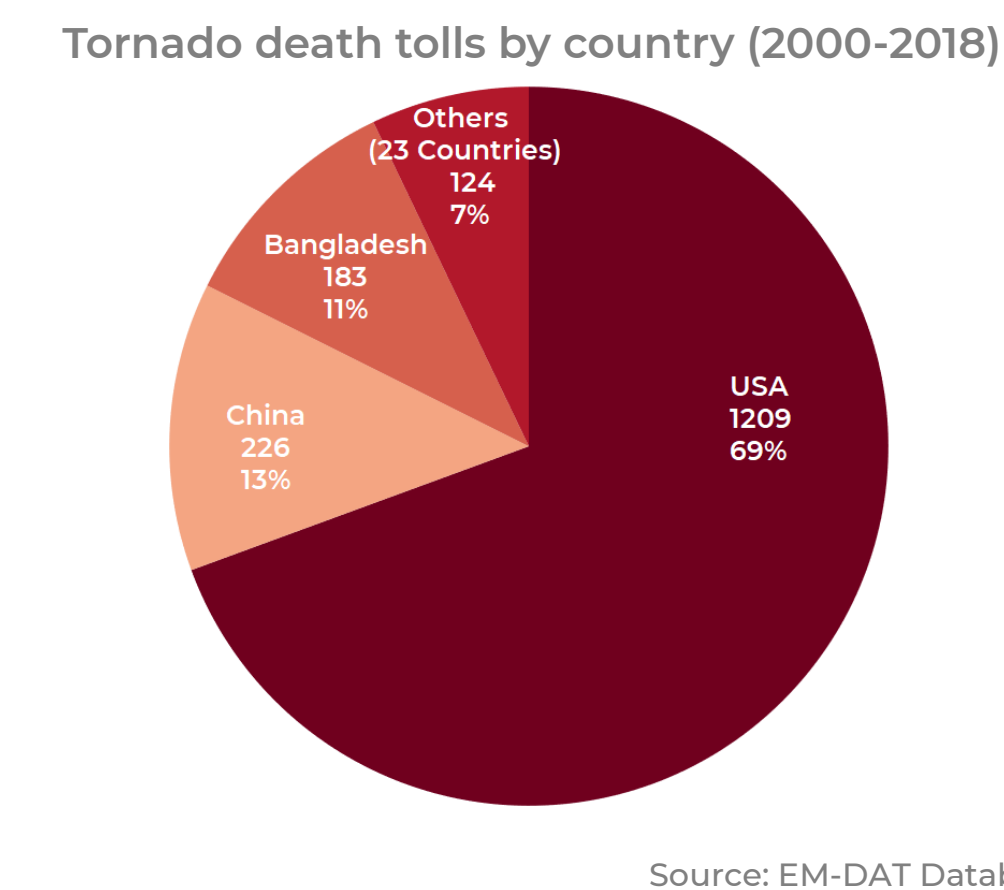
THE EMERGENCY EVENTS DATABASE (EM-DAT)

- Reference database in disaster research field
- Collect data on occurrence and impact of natural and technological disasters since 1900
- Strengthen the evidence base
- Improve rational decision making
- Set priorities for policymaking



ASSESS HEALTH AND HUMAN IMPACT

- Understand health and socio-economic impacts
- Make disaster profiles of countries and overviews of certain periods
- Participate in high-level consortia to address knowledge gaps
- Collect primary and secondary data through fieldwork and collaborations



CENTRE FOR RESEARCH ON THE EPIDEMIOLOGY OF DISASTERS

RESEARCH SCOPE

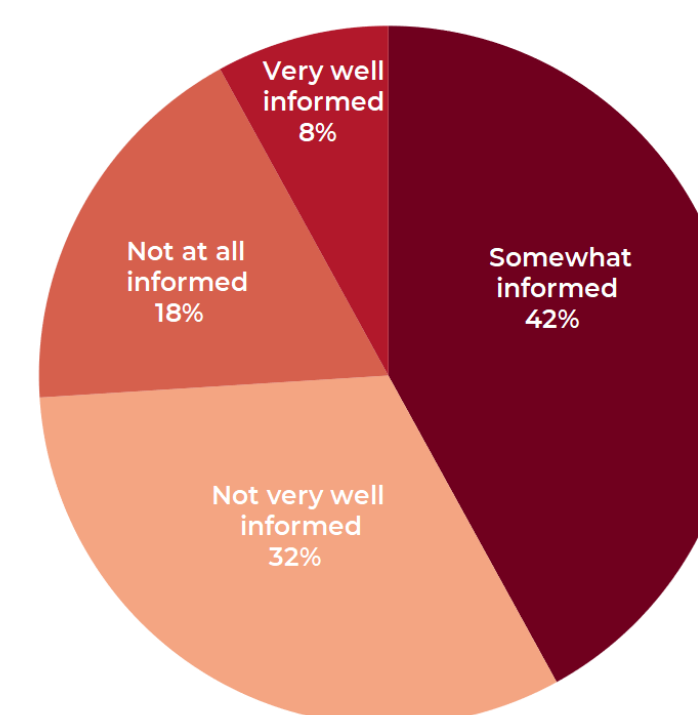
CRED research includes two main axes: natural disasters and crisis situations caused by civil strife, conflict or others.

CRED studies broader aspects of humanitarian crises and emergencies, such as socio-economic, gender and environmental issues, with a strong focus on the special needs of vulnerable groups such as women and children.

IMPROVE DISASTER PREPAREDNESS AND RESPONSE

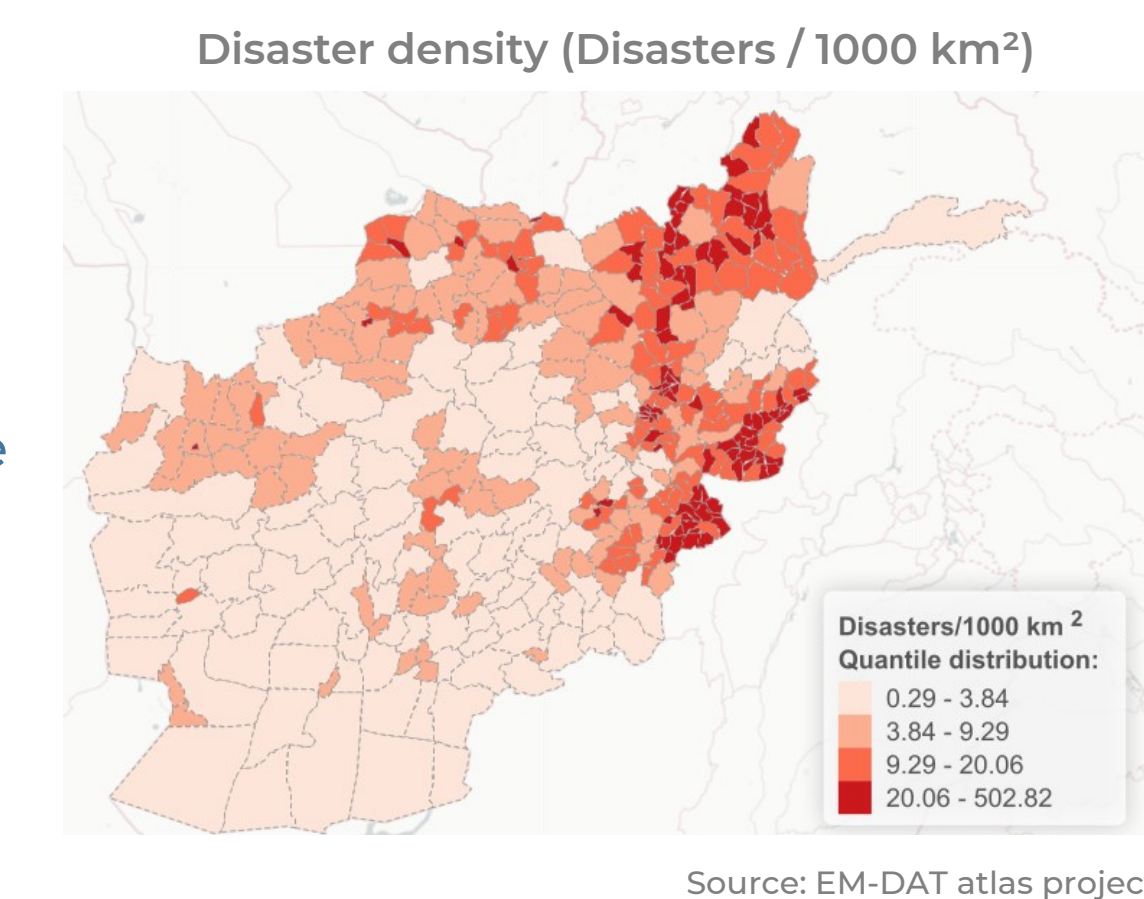
- Analyse preparedness policies and disaster response
- Advise different governance levels on strategies
- Assess risk awareness of the general public and vulnerable groups
- Analyse the needs and resilience of healthcare facilities

To what extent do you consider yourself informed about heatwaves?



USE TECHNOLOGIES TO IMPROVE EFFECTIVENESS

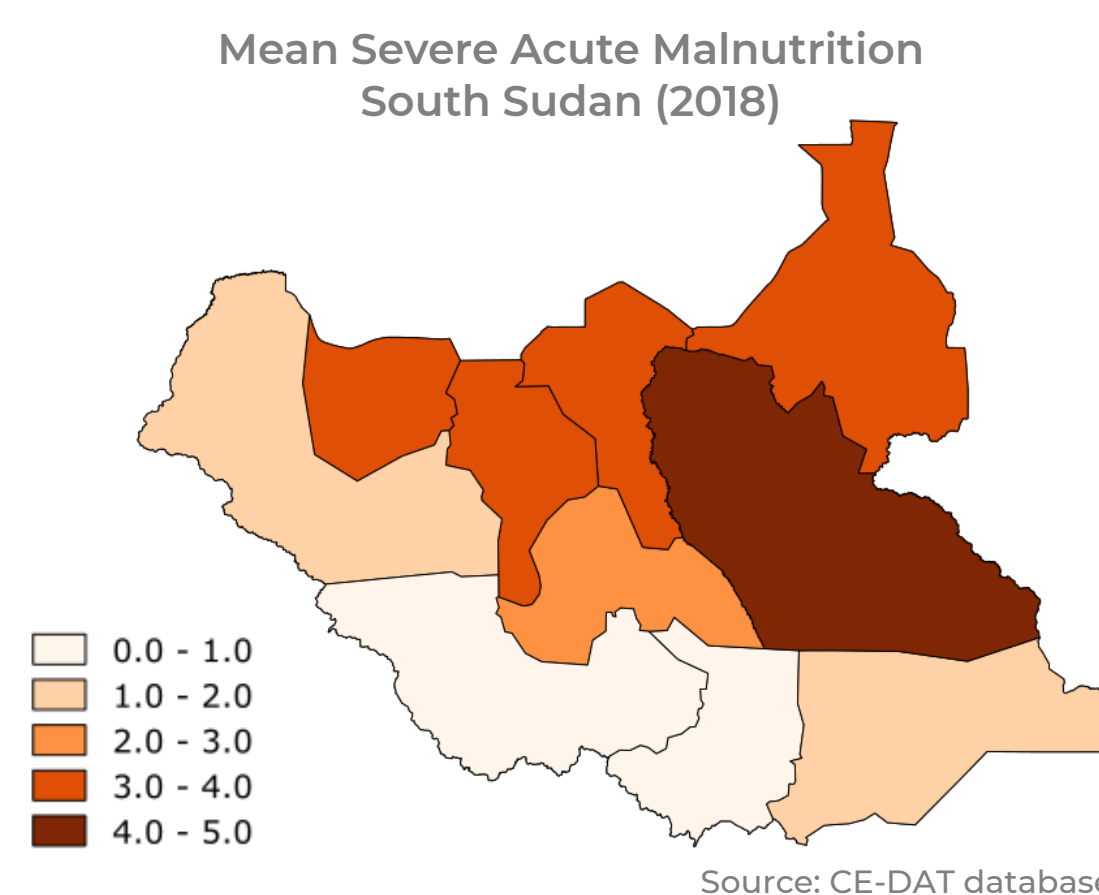
- Explore application of Earth Observation satellite systems
- Support decision making awareness in inaccessible or dangerous environments
- Apply web mapping to improve visualisation of heavily affected areas



CRISIS SITUATIONS CAUSED BY CIVIL STRIFE, CONFLICTS OR OTHERS

THE COMPLEX EMERGENCY DATABASE (CE-DAT)

- Database with mortality and malnutrition rates of affected communities
- International survey repository with epidemiological (SMART) surveys
- Encourage rational, evidence-based humanitarian decision making
- Set priorities for human and financial resources of humanitarian organisations



ASSESS HEALTH AND HUMAN IMPACT

- Identify and measure the health status of affected communities
- Map and model mortality and nutrition patterns
- Assess excess mortality in conflict affected areas
- Improve the database through data collaboration

