



CRED CRUNCH

Issue No. 12

“Disaster Data: A Balanced Perspective”

April 2008

Natural disasters in 2007

In 2007, 414 natural disasters were recorded in the EM-DAT database. They killed more than 16 thousand people, affected over 234 million others and caused almost 75 US\$ billion in economic damages.

Compared to previous years, there is a reduction in disaster mortality- the third lowest of the last decade and far below the 2000-2006 period average (73,946).

With regard to the distribution of disasters over the time and therefore their impacts most of these are concentrated between June and September 2007.

Floods and windstorms remain the most important source of casualties and economic damages. They accounted for more than 86% of the overall disaster mortality and hydro-meteorological disasters accounted for more than 98% of total affected.

Once again, Asia was the region hardest hit by natural disasters; especially by the major summer floods that particularly affected China, India, and the Bangladesh. These floods killed more than 4200 persons and affected over 168 million others. Bangladesh was also the country that suffered 2007's most deadly disaster, cyclone Sidr, which killed 4234 persons.

Over the last decade, on average, half of the persons affected by natural disaster each year were Chinese. This year with over 120 million persons affected, China's population remains the one with the most persons affected by natural disasters.

In terms of economic impacts, even if in 2007 no mega-disaster occurred, the reported economic losses were especially high. Japan and Europe were particularly badly hit last year with the July earthquake in Japan (12.5 billion US\$), the Kyrill winter-storm in continental Europe (9.01 billion US\$), and the June-July floods in the UK (8 billion US\$).

Debarati Guha-Sapir

Director, CRED

Economic impact in 2007:

10 most affected countries

In absolute amounts (US\$ billion)		As percentage of the GDP	
Japan	13.8	Oman	9.62
United Kingdom	9.6	Dominica	7.46
United States	9.4	Bolivia	4.64
China P Rep	8.0	St Lucia	4.18
Germany	5.5	Bangladesh	3.42
Oman	3.9	Madagascar	3.28
Mexico	3.6	Jamaica	2.79
Bangladesh	2.4	Mozambique	2.10
Peru	2.0	Peru	1.97
Pakistan	1.9	Viet Nam	1.42

Natural disasters² in 2007: summary

	2007	2000-2006 yearly average
No. of country-level disasters	414	394.7
No. of countries affected	133	116.3
No. of people killed	16,847	73,946
No. of people affected	211 million	234 million
Economic damages (US\$)	74.99 billion	81.86 billion

2: The CRED CRUNCH newsletter does not include epidemics as natural disasters unless explicitly stated

Human impact in 2007:

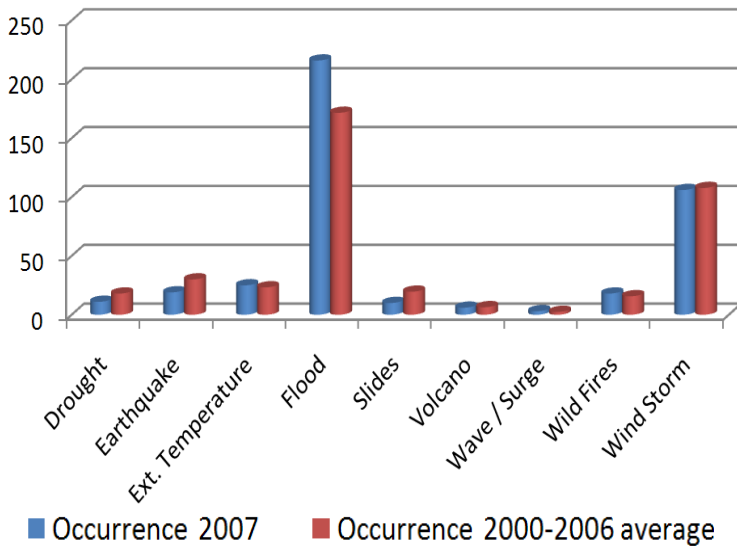
10 most affected countries

No. of people killed		No. killed/100,000 inhabitants	
Bangladesh	5,635	Solomon Is	10.2
India	2,236	Hungary	5.0
China P Rep	1,161	Bangladesh	3.5
Pakistan	911	Nicaragua	3.3
Korea Dem P Rep	610	Oman	2.9
Peru	603	Papua New Guinea	2.8
Indonesia	580	Dominica	2.8
Hungary	500	Korea Dem P Rep	2.6
United States	333	Peru	2.1
Viet Nam	326	Dominican Rep	2.0

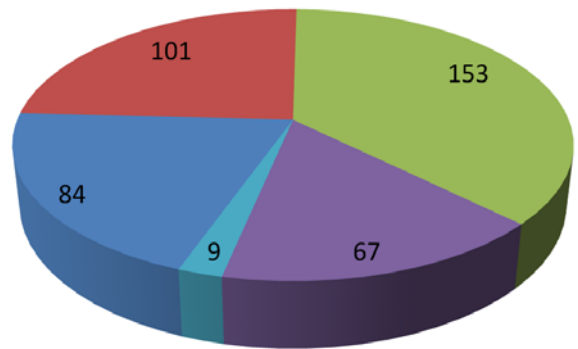
No. of people affected (million)		No. affected/100,000 inhabitants	
China P Rep	120.11	Macedonia FRY	48,814
India	38.14	Swaziland	35,352
Bangladesh	22.93	Lesotho	19,380
Zimbabwe	2.12	Zimbabwe	18,045
Philippines	2.02	Bangladesh	14,421
Mexico	1.86	Zambia	12,778
Pakistan	1.65	Dominica	10,458
Viet Nam	1.65	China P Rep	9,095
Colombia	1.61	Bolivia	8,389
Zambia	1.55	Belize	6,431

All the figures presented in the CRED Crunch are coming from "EM-DAT: The OFDA/CRED International Disaster Database"

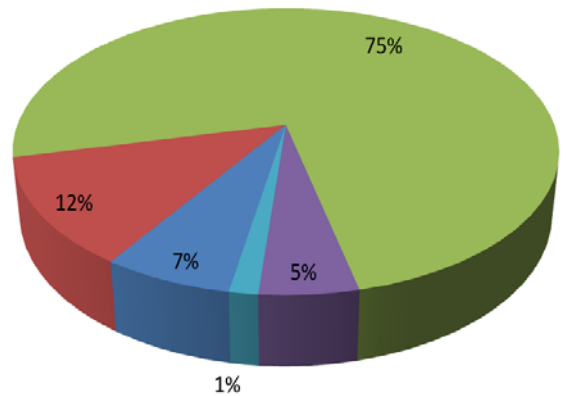
Disaster occurrence by disaster type, 2007 vs 2000-2006 average



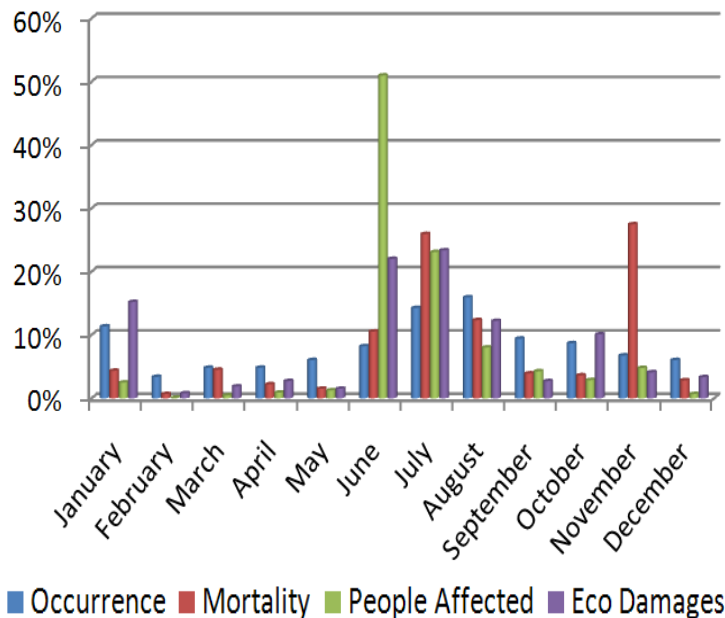
Disaster occurrence by region, 2007



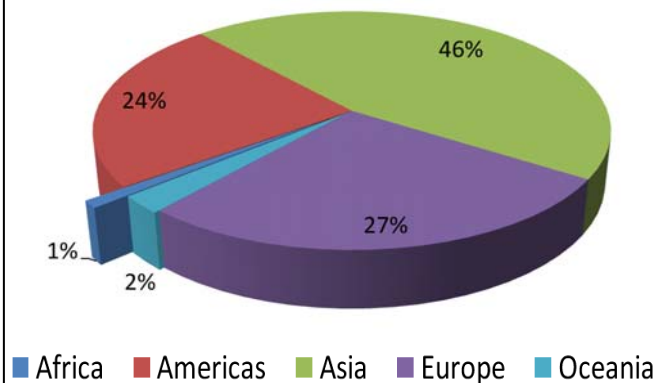
Disaster mortality by region, 2007



Disaster occurrence and impacts 2007 monthly distribution



Disaster economic damages by region, 2007



CRED News

- CRED is pleased to present the 2008 Summer Course on Assessing Public Health in Emergency Situations (APHES). This course is scheduled to take place on July 7-18, 2008 in Brussels, Belgium. More information at: <http://www.cred.be/Aphes/>
- CRED is currently carrying out a census of all the existing disaster data collection initiatives. If you are in charge of a disaster related information database or if you know an interesting initiative, please do not hesitate to share your information with us. ([contact us](#) / [census form](#))
- CRED is happy to announce the launch of the new CE-DAT Website Data Tools and Interface: www.cedat.be

Please note that disaster data are subject to change as validation and cross-referencing of the sources is undertaken and as new information becomes available. For any enquiries please contact contact@emdat.be or visit www.emdat.be